

Integrated Packages: Pharmacokinetics

XenoGesis has developed a series of ADME packages which are designed to help clients answer key questions on how their drug discovery compounds behave in key areas such as absorption, clearance, distribution and oral bioavailability. The packages build sequentially to predict oral exposure in pre-clinical species and ultimately the likely efficacious pharmacokinetics and dose in man.

They are designed to be part of a robust iterative screening cascade during drug discovery ultimately leading to better informed decisions with an understanding of drug exposure with respect to efficacy and safety.

To find out more, contact a member of the XenoGesis team.
Telephone: +44 (0)115 837 0626
Email: info@xenogesis.com

This package has been designed to help understand whether your molecule is fit for purpose by generating a predicted hepatic clearance, volume of distribution and half-life. These parameters are essential to determine during an early stage drug screening cascade.

Description of Service

Predicted clearance, distribution and half-life in pre-clinical species and/or man using GastroPlus™

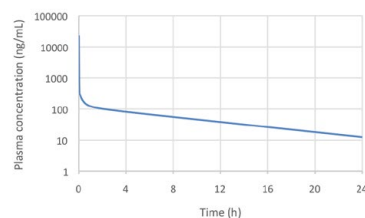
Data collected

- LogD_{7.4}
- pKa
- Blood:plasma ratio, Hepatocyte CL_{int}, PPB (for each species)

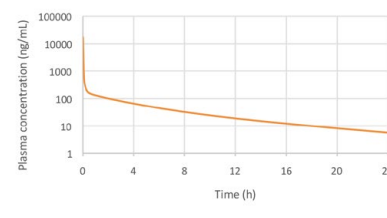
Report format

XenoGesis will generate a written report together with a simulated concentration-time profile from 1mg/kg IV bolus dose for each species.

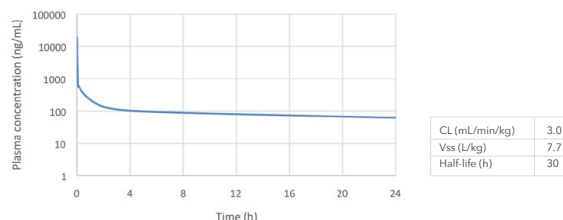
Predicted plasma exposure in rat @ 1mg/kg IV



Predicted plasma exposure in dog @ 1mg/kg IV



Predicted plasma exposure in man @ 1mg/kg IV



XenoGesis Ltd is an independent laboratory-based contract research organisation specialising in pre-clinical drug metabolism & pharmacokinetics (DMPK), quantitative bioanalysis, pharmacology and expert interpretation.

XenoGesis has state-of-the-art *in vitro*, *in vivo* and bioanalytical capabilities. With its expert pharmacokinetic/pharmacodynamic (PK/PD) interpretation and consultancy services, XenoGesis provides bespoke, iterative, data-driven feedback to clients with next step recommendations.